

An abstract collage artwork featuring a variety of colors and textures. The composition includes large, irregular shapes in shades of purple, yellow, red, blue, and white. There are also smaller, scattered elements like dots and lines in various colors. The overall effect is a complex, layered visual experience.

AILEEN AUDETTE
MAKE-UP ARTIST







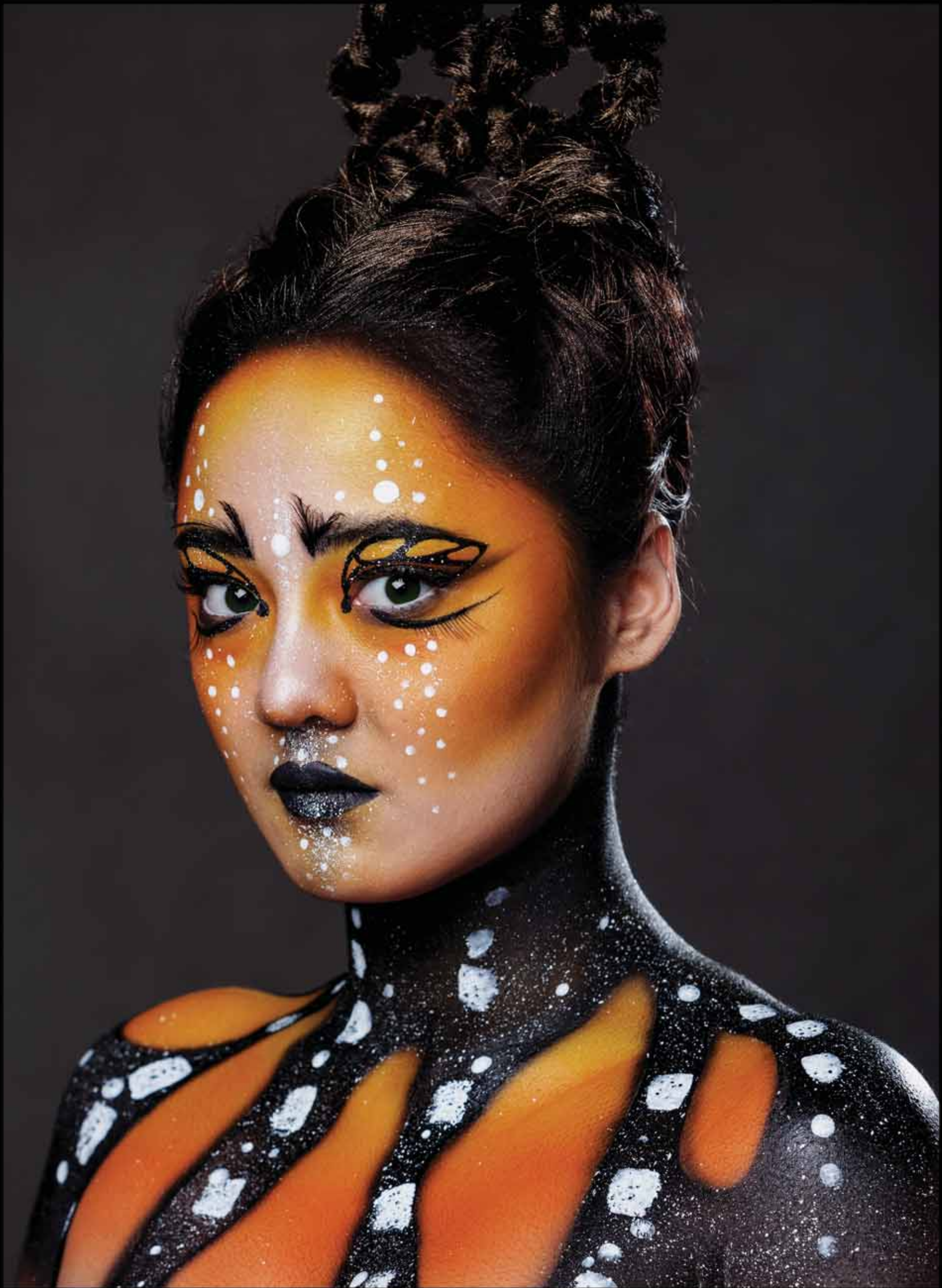




1920s



1960s







HAND LAID GOATEE AND SIDEBURNS
VENTILATED AND APPLIED LACE MOUSTACHE



HAND LAID BEARD AND MOUSTACHE







FRESH BRUISING



FIFTH DAY



NINTH DAY



DISSIPATING BRUISE



SCULPTED, FABRICATED, AND APPLIED PROSTHETIC INJURIES



SCULPTED, FABRICATED, AND APPLIED BONDO PROSTHETICS





DESIGNED, SCULPTED, FABRICATED, AND APPLIED PROSTHETICS, WITH PUNCHED EYEBROWS
HAND LAID BEARD, MOUSTACHE, AND HAIRLINE



FABRICATED AND APPLIED BALD CAP





SCULPTED, FABRICATED, AND PAINTED BUST
INSPIRED BY QUARK; FERENGI CHARACTER FROM STAR TREK: DEEP SPACE NINE



DESIGNED, SCULPTED, FABRICATED, AND APPLIED PROSTHETICS
FABRICATED AND APPLIED BALD CAP