

JESSIE BRENNAN
MAKE-UP ARTIST





1930s Styled and Applied Lace-Front Wig



1950s



1960s



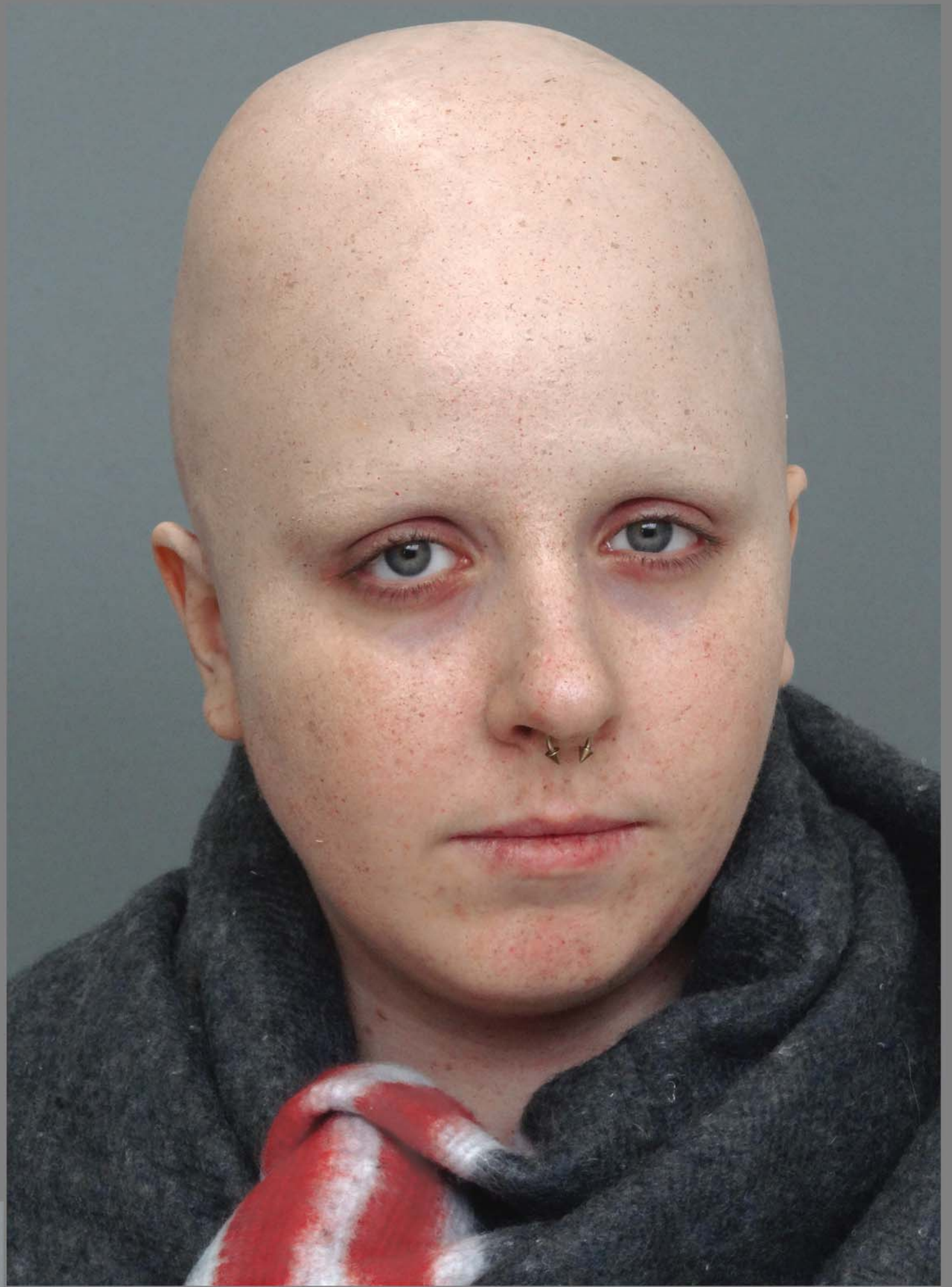


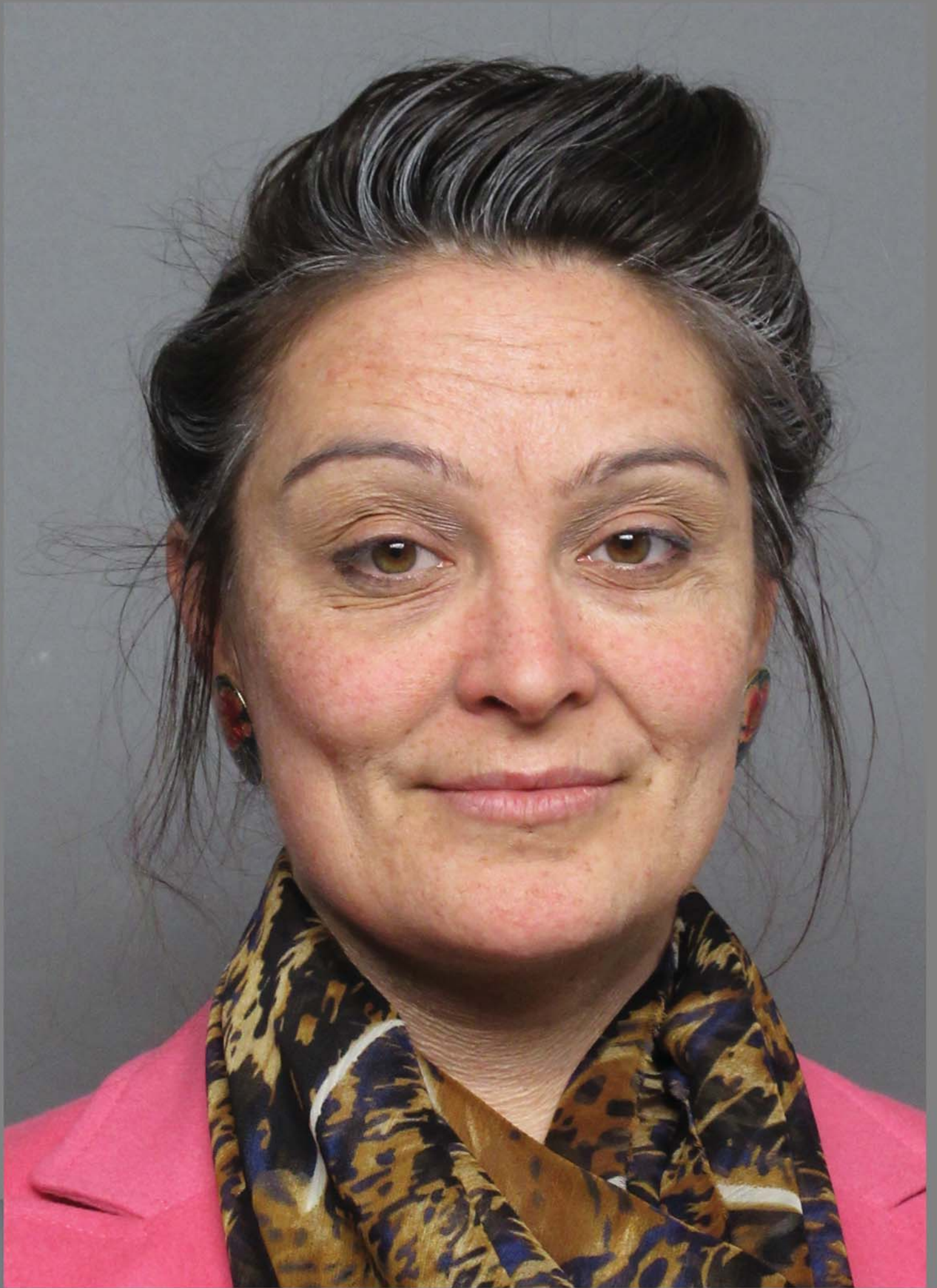






Fabricated and Applied Latex Bald Cap







Fabricated and Applied Prosthetics, Hand-punched eyebrows, Hand laid facial hair



Hand laid goatee and sideburns



Ventilated and Applied Moustache



Hand Laid Beard





Hand laid Facial Hair











Fabricated and Applied Prosthetics, Hand-laid Eyebrows and Facial Hair

